

# Agenda

## Overview and Scrutiny Performance Board

**Tuesday, 24 July 2018, 10.00 am**  
**County Hall, Worcester**

All County Councillors are invited to attend and participate

This document can be provided in alternative formats such as Large Print, an audio recording or Braille; it can also be emailed as a Microsoft Word attachment. Please contact Democratic Services on telephone number 01905 844963 or by emailing [democraticservices@worcestershire.gov.uk](mailto:democraticservices@worcestershire.gov.uk)

## DISCLOSING INTERESTS

There are now 2 types of interests:  
**'Disclosable pecuniary interests'** and **'other disclosable interests'**

### WHAT IS A 'DISCLOSABLE PECUNIARY INTEREST' (DPI)?

- Any **employment**, office, trade or vocation carried on for profit or gain
- **Sponsorship** by a 3<sup>rd</sup> party of your member or election expenses
- Any **contract** for goods, services or works between the Council and you, a firm where you are a partner/director, or company in which you hold shares
- Interests in **land** in Worcestershire (including licence to occupy for a month or longer)
- **Shares** etc (with either a total nominal value above £25,000 or 1% of the total issued share capital) in companies with a place of business or land in Worcestershire.

**NB Your DPIs include the interests of your spouse/partner as well as you**

### WHAT MUST I DO WITH A DPI?

- **Register** it within 28 days and
- **Declare** it where you have a DPI in a matter at a particular meeting
  - you must **not participate** and you **must withdraw**.

**NB It is a criminal offence to participate in matters in which you have a DPI**

### WHAT ABOUT 'OTHER DISCLOSABLE INTERESTS'?

- No need to register them but
- You must **declare** them at a particular meeting where:  
You/your family/person or body with whom you are associated have a **pecuniary interest** in or **close connection** with the matter under discussion.

### WHAT ABOUT MEMBERSHIP OF ANOTHER AUTHORITY OR PUBLIC BODY?

You will not normally even need to declare this as an interest. The only exception is where the conflict of interest is so significant it is seen as likely to prejudice your judgement of the public interest.

### DO I HAVE TO WITHDRAW IF I HAVE A DISCLOSABLE INTEREST WHICH ISN'T A DPI?

Not normally. You must withdraw only if it:

- affects your **pecuniary interests** **OR** relates to a **planning or regulatory** matter
- **AND** it is seen as likely to **prejudice your judgement** of the public interest.

### DON'T FORGET

- If you have a disclosable interest at a meeting you must **disclose both its existence and nature** – 'as noted/recorded' is insufficient
- **Declarations must relate to specific business** on the agenda
  - General scattergun declarations are not needed and achieve little
- Breaches of most of the **DPI provisions** are now **criminal offences** which may be referred to the police which can on conviction by a court lead to fines up to £5,000 and disqualification up to 5 years
- Formal **dispensation** in respect of interests can be sought in appropriate cases.

## Overview and Scrutiny Performance Board Tuesday, 24 July 2018, 10.00 am, County Hall, Worcester

### Membership

#### Councillors:

Mrs E A Eyre (Vice Chairman), Mr A A J Adams, Mrs J A Brunner, Mr P Middlebrough, Mrs F M Oborski, Mr C B Taylor and Mr P A Tuthill

#### Co-opted Church Representatives (for education matters)

Bryan Allbut (Church of England)

#### Parent Governor Representatives (for education matters)

Ms C Richardson (Parent Governor) and Vacancy (Secondary)

### Agenda

Item No	Subject	Page No
1	<b>Apologies and Welcome</b>	
2	<b>Declaration of Interest and of any Party Whip</b>	
3	<b>Public Participation</b> Members of the public wishing to take part should notify the Head of Legal and Democratic Services in writing or by e-mail indicating the nature and content of their proposed participation no later than 9.00am on the working day before the meeting (in this case 23 July 2018). Enquiries can be made through the telephone number/e-mail address below.	
4	<b>Confirmation of the Minutes of the Previous Meeting</b> (previously circulated)	
5	<b>Annual Worcestershire County Council Community Safety Report</b>	1 - 12
6	<b>Road Safety</b>	13 - 14
7	<b>Member Update and Cabinet Forward Plan</b>	15 - 18

Agenda produced and published by the Head of Legal and Democratic Services, County Hall, Spetchley Road, Worcester WR5 2NP. To obtain further information or hard copies of this agenda, please contact Alyson Grice (01905 844962)/Samantha Morris 01905 844963 email: [scrutiny@worcestershire.gov.uk](mailto:scrutiny@worcestershire.gov.uk)

All the above reports and supporting information can be accessed via the Council's website [here](#)

This page is intentionally left blank

## **OVERVIEW AND SCRUTINY PERFORMANCE BOARD 24 JULY 2018**

### **ANNUAL WORCESTERSHIRE COUNTY COUNCIL COMMUNITY SAFETY REPORT**

---

#### **Summary**

1. The Overview and Scrutiny Performance Board (OSPB) is asked to:
  - consider the Annual Update on developments in relation to Community Safety in Worcestershire:
  - consider the County Council's role, with partners in relation to Modern Day Slavery and Trafficking

#### **Background**

2. Key partners involved in community safety have been invited to attend.
3. Appendix 1 to this Report sets out an overview of the activities that the Council has been and is engaged in relating to its community safety function.
4. Worcestershire County Council (WCC) as a Responsible Authority has to comply with its duty under s.17 Crime and Disorder Act 1998 (as amended), which requires each Authority to exercise its functions with due regard and to do all that it reasonably can to prevent crime and disorder, anti-social behaviour and the misuse of drugs and alcohol and other substances and reduce reoffending.
5. This is a corporate responsibility for **all** WCC Directorates, although the strategic co-ordination of community safety partnership working and corporate leadership sits with the Director of Public Health (DoPH) in the Directorate of Public Health (PH).
6. Section 30 of the Health and Social Care Act 2012, gives the DoPH, responsibility for, amongst other matters, their Local Authority's role in co-operating with the police, the probation service and the prison service to assess the risks posed by violent or sexual offenders. They should also work with local criminal justice partners and Police and Crime Commissioners (PCC) to promote safer communities.
7. WCC fulfils its s.17 duty in a number of ways across Directorates, through commissioning, strategic and policy development, operational activity and effective partnership engagement and leadership.
8. A diagram showing the bodies engaged in community safety in Worcestershire and the links between partners is attached as Appendix 2.
9. A short briefing will focus on the issues and activity relating to modern slavery.

10. Further to the OSPB held on 7 September 2017, to consider the annual community safety report, the main points noted by the Vice Chairman and minuted, requesting further information on the West Mercia Police and Crime Panel, domestic abuse, modern slavery and Regulatory services role, were all subsequently provided.

### **Crime Data**

11. The West Mercia Police Performance summary for January – March 2018 (attached at Appendix 3), which contains crime information and some analysis across the force area and specifically for the north and south Worcestershire CSP areas. This is used to inform key partnerships and the West Mercia Police and Crime Panel. The summary highlights what is always a complex picture and changes over time in recording methods and data can make longitudinal comparisons difficult. However, nationally and locally there is an overall increase in recorded crime in many categories, with a notable increase in violent related crime but a decrease in recorded anti-social behaviour. The quality of intelligence and analysis of data to understand the emerging problems is critical for the police and our own partnership responses. The Police are producing a range of new analytical products that provide far more locality detail about key crime issues and also a methodology to predict where and how certain crime types manifest themselves. Going forward these will be shared with partnerships and operational agencies and will be significant improvement in enabling standardised information for use across Worcestershire.

### **Current Focus and risks**

12. Nationally and locally the nature of crime has been changing. The relative increase in violence, often has a consequential impact upon more vulnerable victims. Specific and emerging challenges such as County Lines drug dealing, child criminal exploitation, modern slavery and trafficking, domestic abuse and serious and organised criminal gangs are evident to varying degrees in Worcestershire. Although a lower risk, there also has to be vigilance around potential violent extremism and there are concerns nationally about people who are potential perpetrators, but not "in plain sight". National policy is focusing on these issues and notably there is work developing around the Governments National Violence Strategy and locally, policy and operational responses to a recent Home Office locality review on County Lines in Worcestershire are taking place. A recent report from the Local Government Association – "Public Health approaches to reducing violence", will be considered as part of this current focus.

13. Partnership working is cited by the Home Office as increasingly important in supporting the Police and the Police and Crime Commissioner (PCC) in tackling these issues and prevention and early intervention (as well as supporting victims of crime) needs to become a cornerstone of this approach.

14. These are all areas where WCC and its partners have significant responsibilities and expertise to support this ambition, with our own focus including safeguarding, education, commissioned services, community safety, communications and ensuring the health and wellbeing of the local community. The improvements in data and analysis that are being shared across the partnership by the Police should enable a common understanding of this changing environment so that the right strategic and operational responses can be put in place. There is a strong response underway to

tackling serious and organised crime and WCC and other key partner will play an active intelligence led role in the new county Serious and Organised Crime Joint Action Group (SOCJAG) set up by the Police.

## **Conclusion**

15. WCC continues to meet its own duties relating to community safety as far as it reasonably can and makes a significant contribution across Worcestershire and West Mercia through its leadership role and its commissioned services.

16. There is a requirement to adapt to changing community safety and criminal activity and WCC as a significant Responsible Authority is committed to further understanding the problems and finding preventative and operational solutions to minimise risk and harm to our population.

17. The Directorate of Public Health and the DoPH will continue to ensure that systems assurance and rigour is embedded in the Council's responsibilities for community safety.

## **Purpose of the Meeting**

18. The OSPB is asked to consider:

- (a) The content of the Annual Community Safety report;
- (b) Whether it wishes to make any comments to the Cabinet Member for Health and Well-being, WCC officers or partner agencies; and
- (c) Whether there are any issues which should be the subject of future scrutiny work.

## **Supporting Information**

Appendix 1: Worcestershire County Council activities on Community Safety.

Appendix 2: Diagram setting out Community Safety governance in Worcestershire.

Appendix 3: West Mercia Police Performance Summary for [January - March 2018](#)

## **Specific Contact Points for this report**

Tim Rice, Senior Public Health Practitioner (Public Health Directorate) (01905) 843107  
Email: [trice@worcestershire.gov.uk](mailto:trice@worcestershire.gov.uk).

## **Background Papers**

In the opinion of the proper officer (in this case the Head of Legal and Democratic Services) the following are the background papers relating to the subject matter of this report:

All Agendas and Minutes are available on the Council's website at:

<http://www.worcestershire.gov.uk/cms/democratic-services/minutes-and-agendas.aspx>

This page is intentionally left blank



## Worcestershire County Council Community Safety overview

### Worcestershire Safer Communities Board (SCB) and North and South Worcestershire Community Safety Partnerships (CSPs):

The Safer Communities Board (SCB) has **strategic** oversight of community safety in Worcestershire and oversees a number of sub-groups, the Worcestershire Forum against Domestic Abuse, the Worcestershire Prevent Strategy Group, the Worcestershire Reducing Offending Group and Worcestershire Substance Misuse Oversight Group. The SCB is co-ordinated and led by Public Health (PH) and the Director of Public Health (DoPH) is the Chair.

An annual plan with associated strategic actions is produced and monitored. Its priorities are reducing offending, harm reduction, domestic abuse and tackling drugs and alcohol

The North and South Worcestershire CSPs have the statutory community safety responsibilities at local level and a PH officer and the WCC cabinet member for Health and Well Being attend both CSP's.

#### 2017/18 Outcomes

- Annual reports received from the chairs/lead officers from the Forum against Domestic Abuse, the Reducing Offending Strategy Group, Substance Misuse Oversight Group and Prevent Strategy Group on their activities and outcomes.
- Monitoring of the annual CSA action plan.
- Community Safety Information sharing Protocol completed.
- Commissioning review of how Modern Day slavery is managed within WCC

#### 2018/19 current activity

- New Community Safety Agreement (2018/19) actions being monitored.
- 6 Month review of Information Sharing Protocol to include compliance with GDPR.
- Work underway with partners to localise the Government's Serious Crime Strategy.

**Crime Data/monitoring:** Information is provided as required in relation to specific reports from SCB sub groups.

### West Mercia Police and Crime Commissioner and West Mercia Police and Crime Panel (PCP):

**PCC:** WCC works closely with the PCC and supports his Police and Crime Plan objectives. Council officers support work with the PCC through the West Mercia Crime Reduction Board and Victims Board.

**PCP:** The Council is responsible for the administration and support of the Panel and this is managed by officers from Legal and Democratic and Public Health team.

#### 2017/18

- Consideration of the PCC response to HMICFRS national reports on modern

#### 2018/19 current activity

- Scrutiny on the HMICFRS inspection report: PEEL Police effectiveness

<p>slavery and sexual violence and domestic abuse.</p> <ul style="list-style-type: none"> <li>• Consideration and comment on the PCC's annual report.</li> <li>• Member Task and Finish sub group scrutiny of budget and precept proposals, reported back to PCP for decision.</li> <li>• Consultation and scrutiny by the PCP of the PCCs consultation on transferring Fire Authority responsibilities.</li> </ul>	<p>2017</p> <ul style="list-style-type: none"> <li>• Consideration and comment on the PCC's annual report.</li> <li>• Officers and the new PCP chair attending LGA workshops on the preparing for new working arrangements for the PCP with regard to the transfer of fire and rescue responsibilities to the PCC (currently subject to Judicial Review).</li> <li>• An Induction Programme to be designed for members on their potential new responsibilities.</li> <li>• The PCP has become a member of the new National Association of Police Fire and Crime Panels, which will provide support and assistance to the PCP in carrying out its responsibilities</li> </ul>
<p><b>Crime data/monitoring:</b> Specific quarterly reports and crime trend data and analysis presented to the PCP, plus ad hoc reports as requested.</p>	

<p><b>Reducing reoffending:</b></p>	
<p>The duty to support the reduction of reoffending primarily sits with the CSPs. Worcestershire Reducing Offending Strategy Group oversees the Partnership work in this area and supports activities to reduce offending and re-offending across the county. The focus of the work is through the One Day One Conversation (ODOC) multi-agency meeting that considers individual offenders and tactical responses to reduce their risk of reoffending.</p>	
<p>2017/18</p> <ul style="list-style-type: none"> <li>• Introduction of a standard set of performance data across W Mercia.</li> <li>• Mental health representation has been secured on both groups.</li> </ul>	<p>2018/19 current activity</p> <p>A draft strategy for Worcestershire to be developed for consultation by September 2018. Membership of the new county wide Serious and Organised Crime Joint Agency Group (SOCJAG).</p>
<p><b>Crime data/monitoring:</b> In a comparison during the 1<sup>st</sup> quarter 2017, 80 offenders on the cohort committed 160 offences whereas, in the 1<sup>st</sup> quarter 2018, 60 offenders on the cohort committed 112 offences.</p>	

<p><b>Harm Reduction</b> (incorporating Hate Crime, safeguarding, cyber- crime, modern slavery, Child sexual exploitation, Preventing violent extremism).</p>
<p><b>Hate Crime:</b> Hate crime is not recorded as a specific crime type, but a marker is applied to offences to enable analysis. It is primarily led by the CSPs through their Hate Incident methodology (North Worcestershire Hate Incident Partnership and South Worcestershire Hate Crime Forum).</p>

**Child Sexual exploitation:** A strategic group reporting to the Children's Safeguarding Board supports activities through its action plan. The group may be expanding its remit to consider other areas of child exploitation eg through County Lines, gangs and modern slavery.

**Prevent Duty:** A WCC PH officer chairs the statutory Channel Panel which is a multi-agency group that considers voluntary referrals of children, young people and adults where there are specific Prevent related safeguarding concerns about radicalisation or extremism.

A Worcestershire Prevent Strategy group is led and chaired by WCC PH to ensure that Prevent is being effectively embedded across the County. The Group consists of the "Specified Authorities", to whom the Prevent duty applies. An action plan is maintained that draws upon recommendations from the annual Police Special Branch Counter Terrorism Profile (CTLP) for Worcestershire, which is a restricted document.

The 2018 CTLP concludes that Worcestershire is considered to be a safe and low risk area in relation to risks of terror attacks but all parties must be vigilant and have polices and processes in place to ensure that risk is mitigated.

Redacted data is presented to Adults' and Children's Safeguarding Boards as well as to the Prevent Strategy Group and the SLT. It has become apparent that Autism, Learning Difficulty and Mental Health plays a part in 55% of referrals and this is to form a focus moving forward, particularly in reviewing, and developing recommendations from a Surrey CC review of a significant Channel case.

**Domestic Abuse:** The Worcestershire Forum against Domestic Abuse, which is chaired and co-ordinated by PH has continued to work towards the prevention and reduction of domestic abuse in all its forms. The Board and its partners are very proactive in raising awareness of DA and supporting working arrangements to assist survivors and victims of DA. Comprehensive reports on DA are produced for the Forum and its partners. An annual action plan is monitored by the Forum.

**Drugs and Alcohol:**

Worcestershire CC (with £106k support from the PCC) commissions the criminal justice element of the integrated substance misuse service in Worcestershire. This includes assessment and referral services in police cells and criminal courts, criminal justice pathways focussing on DIP, drug testing on Arrest and Drug Rehabilitation requirement (DRR) and Alcohol Treatment Requirement (ATR) services in liaison with National Probation Service and the Community Rehabilitation Company. PH chair the Substance misuse oversight group which is a partnership working group focusing on alcohol and substance misuse.

2017/18	2018/19 current activity
<ul style="list-style-type: none"> <li>• Officers supported the Hate Crime week campaign October 2017.</li> <li>• Public Health Practitioner now attending Learning Development and Staying Safe Boards to contribute to the Hate Crime activity</li> <li>• A new approach to staff awareness raising on radicalisation and</li> </ul>	<ul style="list-style-type: none"> <li>• S Worcestershire have convened a Hate Crime Group and establish regular meetings</li> <li>• SCB representative contributing to hate crime meetings on N and S Worcestershire.</li> <li>• Reports on the Prevent duty scheduled for the Adults and the</li> </ul>

<p>extremism provided for WCC staff through work by PH and L&amp;D to create and implement eLearning/awareness packages.</p> <ul style="list-style-type: none"> <li>• Set up of triage arrangements via the family Front Door and Adult Safeguarding team for referrals.</li> <li>• The new DA service was recommissioned by WCC PH from July 2017 with West Mercia Women's Aid and Rooftop Housing Group.</li> <li>• New Domestic Abuse Strategy 2017-20 launched with action plan.</li> <li>• A successful bid made to the DCLG for funding to support work with BME victims and a successful bid to pilot the DRIVE project (working with perpetrators).</li> <li>• Professionals DA information pack reviewed and re-launched August.</li> <li>• The Forum Children's Group re-formed under the chair of Assistant Director of Children's Services with new focus on audit and assurance that children are safer.</li> <li>• Best Bar None (licensee run supported by other agencies including PH) extended to Bromsgrove and a scheme in Malvern is being considered.</li> <li>• The H&amp;WBB Alcohol event was held in November 17 during Alcohol Awareness Week.</li> </ul>	<p>Children's Safeguarding Boards.</p> <ul style="list-style-type: none"> <li>• 2018/19 Action Plan developed from CTLP and local issues</li> <li>• Utilise the learning points from the review into Surrey County council's Channel Panel to audit our Channel Panel processes and structure.</li> <li>• The funding secured from the DCLG to develop sustainable networks with BME communities in relation to DA has commenced in July with the recruitment of specialist staff.</li> <li>• The DRIVE project (working with perpetrators) has commenced with a Governance Board meeting regularly and the successful commissioning of the provider. It is scheduled to be operational in August.</li> <li>• There are three Domestic Homicide reviews at present.</li> <li>• A series of successful campaigns have been delivered throughout the year including "Worried" around Clare's Law, Coercive control and our White Ribbon campaign.</li> <li>• A 12 month pilot of The Blue Light project for resistant drinkers has commenced in Worcester with the Redditch pilot planned to start in the summer (2018). The pilots will be evaluated after 12 months.</li> <li>• PH are developing a Strategic Drugs Plan, on behalf of the Worcestershire Substance Misuse Oversight Group. This is aligned with the priorities outlined in the 2017 national Drugs Strategy</li> <li>• The memorandum of understanding between Adult Mental Health services and Substance misuse service is being reviewed to ensure it is reflective of the PHE publication, 'Better care for people with co-occurring mental health and alcohol/drug use conditions'</li> <li>• Participation in Home Office local assessment on the partnership approaches to County Lines in April. Published report with recommendations now under consideration.</li> </ul>
---	--

**Crime data/monitoring:**

**Hate Crime data**

**North Worcestershire**

	2016/7	2017/8	% change
Hate Offences	318	338	+6.3%
Hate Incidents (Crimed)	37	33	-10.8%

**South Worcestershire**

	2016/7	2017/8	% change
Hate Offences	380	407	+7.1%
Hate Incidents (Crimed)	51	49	-3.9%

The Police believe that Hate Crime is under reported.

**Domestic Abuse Data**

During 1.4.17 – 1.4.18 there have been 10,947 domestic abuse incidents/crimes reported compared to 10,421 in the previous year, an increase of 526 these increases are mirrored in increased calls to the specialist domestic abuse helpline. This is likely to be a reflection of the comprehensive awareness raising partnership approach across Worcestershire, which is a measure of success, with more action being taken against offenders and support provided for victims and survivors of DA. Notwithstanding that progress, underreporting of DA is an ongoing and significant issue and therefore work to raise awareness and confidence to report will continue.

During 2017-18 we have seen a decrease in the number of cases being heard at MARAC from 709 cases to 555. There has been a continued rise in the numbers of victims being protected by the taking out of Domestic Violence Protection Orders, 88 in 2017/18. There is a significant rise in the number of applications and disclosures in relation to Clare's Law (Domestic Violence Disclosure Scheme) since the launch of the "Worried" campaign in November. Domestic abuse as a risk factor remains high in relation to assessments within Children's social care. There was an 11% increase in the total number of children exposed to DA incidents in the first two quarters of 2017 compared to the same period in 2016. There has been a rise in the number of Section 42 referrals in respect of Adult Safeguarding in relation to domestic abuse, with 79% (in 2017/18) being over 50 years of age, with psychological and financial abuse being the key issues.

**Substance Abuse Data**

In 2016/17 and 17/18 performance against all key performance indicators, including those regarding alcohol, opiates and non-opiates, has continued to improve. In addition, improvements for opiates and alcohol are in line with the top quartile range for comparator local authorities. From this year, the HWBB is assessing its performance on alcohol & crime using the violence against person (with injury) with an alcohol marker metric – this has consistently reduced when measured as a percentage of overall violent crime: It constituted 8.2% of violent crime in Feb 2014 - Feb 2015 reducing to 5.7% in Feb 2016 - Feb 2017. It should be noted that an element of this may be in the inclusion of additional categories in the overarching violent crime numbers

**Prevent Data**

Data on the number and nature of referrals into Channel is shared with the Prevent Strategy group as appropriate. The majority of referrals are from the Police.

The headline figures are:

2016/17 - 17 Channel referrals

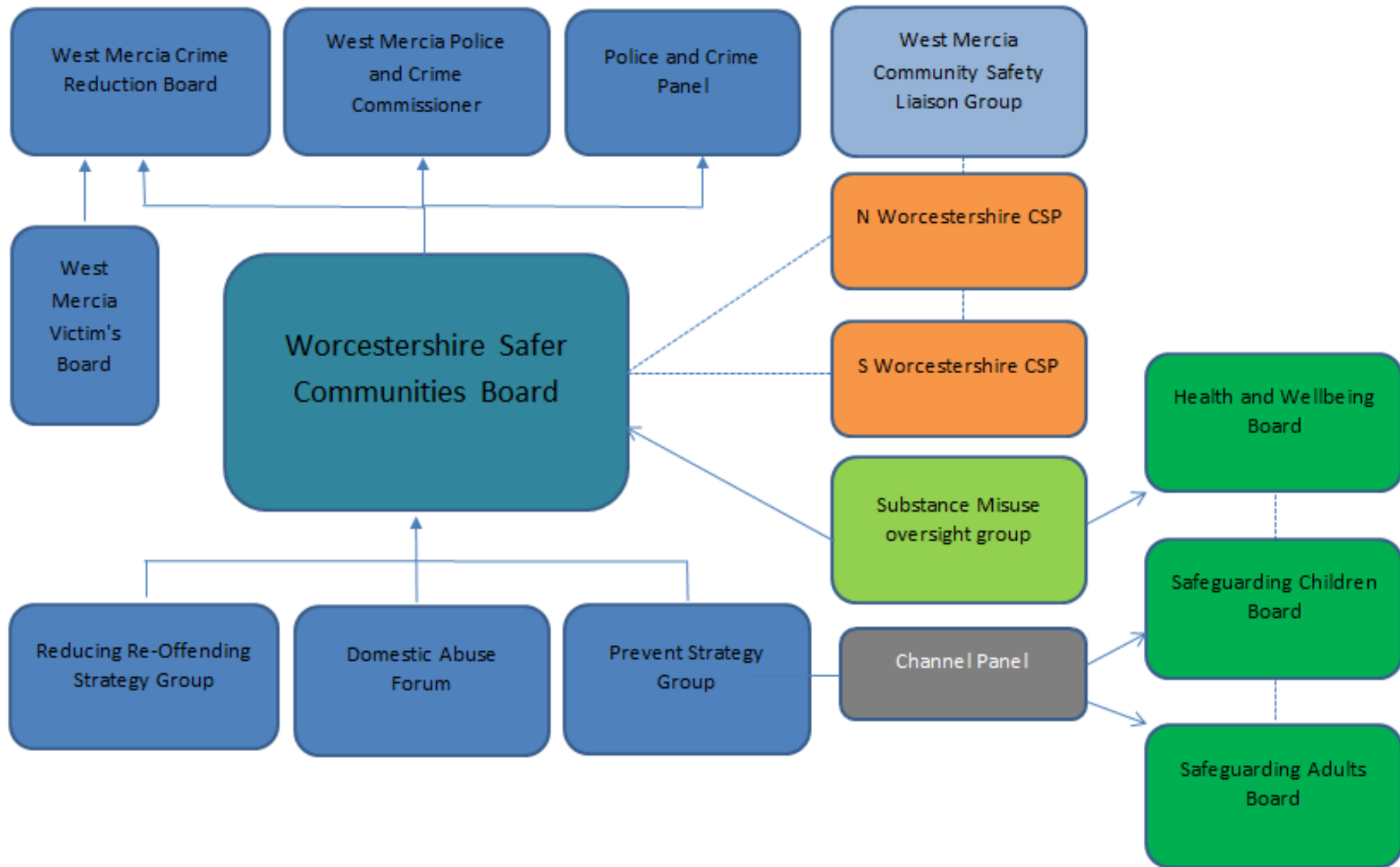
2017/18 - 22 Channel referrals

**Funding and commissioning:**

Set out below are the headline PH costs in relation to community safety related activity. This meets the requirements 2018 /19 Local Authority regulations on the use of Public Health Ring fenced.

PH community safety related expenditure 2017/18 and projected for 2018/19

Staffing (staffing equivalent 3 FTE, including strategic and operational levels)	17/18 actuals £146,370 18/19 budget £145,784
Alcohol and Substance misuse contract:	17/18 actuals £3,780,100 plus £106,000 funded by West Mercia Police and Crime Commissioner 18/19 budget £3,798,000 plus £106,000
Domestic Abuse contract:	17/18 actuals £425,721 18/19 budget £417,000



This page is intentionally left blank



## **OVERVIEW AND SCRUTINY PERFORMANCE BOARD 24 JULY 2018**

### **ROAD SAFETY**

---

#### **Summary**

1. Representatives from the Safer Roads Partnership (covering West Mercia and Warwickshire) have been invited to the Meeting to give a presentation about children's road safety and the County Council's role in relation to this.
2. The Cabinet Members with Responsibility for Communities and Highways, and Officers from the relevant Directorates have also been invited to the Meeting.

#### **Background**

3. The Safer Roads Partnership previously attended the Health and Wellbeing Board in February 2018 and Councillor Middlebrough, the OSPB's Lead Member for Crime and Disorder (and community safety), thought that the Board's annual Crime and Disorder meeting with partners would provide a timely opportunity to discuss the issue further.

#### **Purpose of the Meeting**

4. In the light of the discussion, the Board is invited to comment on the presentation and the information provided and consider whether it would wish to identify any issues which should be the subject of future scrutiny.

#### **Contact Point**

##### Specific Contact Points for this report

Alyson Grice/Samantha Morris, Overview and Scrutiny Officers  
(01905 844962/844963)

Email: [scrutiny@worcestershire.gov.uk](mailto:scrutiny@worcestershire.gov.uk)

#### **Background Papers**

In the opinion of the proper officer (in this case the Head of Legal and Democratic Services) the following are the background papers relating to the subject matter of this report:

- Agenda and minutes of the Health and Wellbeing Board meeting on 27 February 2018

All Council Agenda's and Minutes are available on the Council's website at:

<http://www.worcestershire.gov.uk/cms/democratic-services/minutes-and-agendas.aspx>

This page is intentionally left blank

## **OVERVIEW AND SCRUTINY PERFORMANCE BOARD 24 JULY 2018**

### **MEMBER UPDATE AND CABINET FORWARD PLAN**

---

#### **Summary**

1. The Overview and Scrutiny Performance Board (OSPB) is asked to:
  - (a) Receive an update on emerging issues and developments within the particular remit of each Member of the OSPB, including an update on each Overview and Scrutiny Panel and Task Group;
  - (b) Consider the Council's latest Forward Plan in order to identify:
    - any items it would wish to consider further at a future meeting; and
    - any items it would wish to refer to the relevant Overview and Scrutiny Panel for further consideration.

#### **Member Updates**

2. In order to ensure that Members of the OSPB are fully informed about issues relating to scrutiny in Worcestershire, communication between Members is essential. To assist in this, it has been agreed that an item will be placed periodically on the OSPB agenda to enable each member to feed back on emerging issues and developments within their remit. This will also provide an opportunity to highlight possible future agenda items. Regard for the Council's statutory requirements in relation to access to information will be critical.

3. Board Members' areas of responsibility are as follows:

- Adult Care and Well-Being Overview and Scrutiny Panel – Juliet Brunner
- Children and Families Overview and Scrutiny Panel – Fran Oborski
- Economy and Environment Overview and Scrutiny Panel – Alistair Adams
- Corporate and Communities Overview and Scrutiny Panel – Kit Taylor
- Health Overview and Scrutiny Committee (HOSC) – Paul Tuthill
- Crime and Disorder – Paul Middlebrough
- Quality Assurance – Liz Eyre

4. As part of their role, it was agreed by the Strategic Leadership Team (SLT) that scrutiny lead members should receive regular briefings from the Directorates they are shadowing. These briefings, alongside the Forward Plan (see below), can be used to help identify any emerging issues that may be appropriate for future scrutiny. Recognising that work across the County Council is of interest and value to all OSPB members, the notes from these briefings (where produced) are available to all members electronically.

5. Members may also be leading scrutiny task groups. It will be important for Members of OSPB to be aware of how each scrutiny is developing so that they can fully consider the final report.

6. Overview and Scrutiny Panel Chairmen are asked to feedback on:

- progress on the work of their Panels and any scrutiny task groups they are leading;
- key issues from the Directorate that may be appropriate for future scrutiny;
- performance information they have queries or concerns about;
- items in the Forward Plan which they consider may be possible issues to scrutinise; and
- any other issue which they feel is relevant/of interest to the OSPB.

### **Cabinet Forward Plan**

7. The Board will wish to take into account any issues arising from the Council's Forward Plan which is attached at Appendix 1.

8. The latest version of the Plan (available at the time of Agenda despatch) is routinely considered at each meeting of OSPB.

9. The Board is asked to consider the Council's latest Forward Plan in order to identify:

- Any items that it would wish to consider further at a future meeting;
- Any items that it would wish to refer to the relevant overview and scrutiny panel for further consideration.

10. The OSPB agreed to use a set of criteria (listed below) to help determine its scrutiny programme. A topic does not need to meet all of these criteria in order to be scrutinised, but they are intended as a guide for prioritisation.

- Is the issue a priority area for the Council?
- Is it a key issue for local people?
- Will it be practicable to implement the outcomes of the scrutiny?
- Are improvements for local people likely?
- Does it examine a poor performing service?
- Will it result in improvements to the way the Council operates?
- Is it related to new Government guidance or legislation?

### **Supporting Information**

Appendix 1: Forward Plan (as at 16 July 2018)

### **Contact Point for the Report**

Alyson Grice/Samantha Morris, Overview and Scrutiny Officers

Tel: 01905 844962/844963

Email: [scrutiny@worcestershire.gov.uk](mailto:scrutiny@worcestershire.gov.uk)

## **Background Papers**

In the opinion of the proper officer (in this case the Head of Legal and Democratic Services) there are no background papers relating to the subject matter of this report:

[All agendas and minutes are available on the Council's website here.](#)

## Appendix 1

### FORWARD PLAN

#### FORMAL NOTICE OF KEY DECISIONS TO BE TAKEN BY, AND PRIVATE MEETINGS OF, CABINET (OR OTHER EXECUTIVE DECISION-MAKING BODY OR PERSON)

Forward Plan	Expected Date of Decision	Page No.
<a href="#">Acquisition of Land for the Pershore Infrastructure Scheme</a> CMR Decision	17 August 2018	11
<a href="#">Compliance with Well Managed Highway Infrastructure Code of Practice</a> New Entry	27 September 2018	13
<a href="#">Libraries Re-modelling</a> Potentially Key Decision	27 September 2018	14
<a href="#">Midlands Connect: Sub-National Transport Body</a> Key Decision	27 September 2018	15
<a href="#">Peer Review Outcomes and Forward Look at Adult Services</a>	27 September 2018	16
<a href="#">Adoption of the Rights of Way Improvement Plan</a> Key Decision New Entry	15 November 2018	17
<a href="#">'Called In' Decisions or Scrutiny Reports</a> Potentially Key Decision	Within the plan period	18
<a href="#">Notices of Motion</a> Potentially Key Decision	Within the plan period	19
<a href="#">Withdrawn Items</a>	-	20

All entries will be for decision by Cabinet unless otherwise indicated